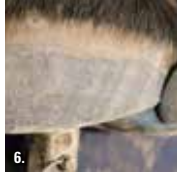


EASYSHOE COMPETE APPLICATION

Hoof Prep

1. Use nitrile or latex gloves while prepping the hoof. Dirt and oil from your hands will easily contaminate the hoof and will compromise the adhesive bond.
2. Trim the horse's hoof in preparation for application of the shoe. If you are applying a barefoot trim don't apply a deep quarter scoop. A deep quarter scoop will only be filed with adhesive.
3. Use a wire brush on the hoof wall, sole and frog to remove all dirt and debris.
4. Use an EasyShoe Fit Kit to determine which size EasyShoe is appropriate.
5. After selecting the appropriate size, trace around the cuffs of the shoe. This is a good time to practice putting the shoe on and off before you start working with adhesive. If you are using the EasyShoe Sport check the heel and frog area for clearance. Trim the heel portion of the shoe now if needed.
6. Use the edge of a rasp to rough the wall areas of the hoof that will have contact with the shoe. Rough approximately 3mm above the traced area.
7. Use a Dremel and a 9931 bit to clean and rough the sole area that will contact the shoe. The Dremel will add a nice sand paper texture to the hoof and allow it to accept adhesive.
8. Use a heat gun or torch to dry the hoof. Do not skip this step. Wire brush the hoof and remove dust.
9. Heat gun or torch the hoof a second time. Wire brush the hoof again and remove all remaining dust.
10. If you are applying dental impression material to the area of the frog and collateral grooves do it now. Do not apply dental impression material to the gluing area.
11. Insert the hoof in a clean hoof boot to maintain the work you have just completed. Do not place the hoof directly onto the ground after the prep is complete. Do not set the hoof on concrete or a rubber mat; use only a clean hoof boot.

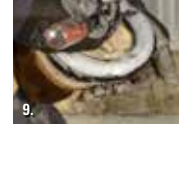


Shoe Handling

Keep EasyShoes clean and away from dust and debris prior to installation. Do not handle EasyShoes with your bare hands; use clear nitrile or latex gloves. Dirt and oil from your hands will easily contaminate clean EasyShoes and will compromise the adhesive bond.

Application of the EasyShoe Compete Using Vettec Adhere

1. Start with a new Vettec Adhere cartridge. If your Adhere has been laying around for months in a horse trailer, or has been exposed to heat for long periods of time or has been exposed to freezing temperatures, do not use. It makes a difference and the glue can be compromised.
2. Insert glue cartridge into a Vettec gun. Cut open the tube of Vettec Adhere at the marker line. Cut perpendicular to the cartridge. Do not cut at an angle.
3. Purge a small amount of material until both sides empty at the same rate.
4. Apply a mixing tip but do not squeeze any material out of the mixing tip yet.
5. Purge the first inch of material that comes out of the mixing tip on the ground, making sure the material is black and shiny in consistency. If the glue is grainy or pale purple and opaque, discard the glue cartridge and start with a fresh cartridge.
6. Apply glue with mixing tip to the grid pattern at the bottom of the shoe. Apply only 2mm of Adhere on the bottom grid pattern only. Apply 2mm of Adhere to the inside walls of the cuff.
7. Apply the shoe to the hoof. Carefully set the horse's foot on the ground. Pick up the opposite foot and hold for three minutes or until the Adhere becomes tacky.
8. After the hoof is weight bearing and during the three minute period above, seal the top of the cuff with your finger. If more glue is needed apply a second mixing tip so a finished looking shoe is achieved.
9. After three minutes, pick up the hoof and remove any Adhere that has come in contact with the sole. A flat bladed screwdriver or a loop knife both work well. *This is a very important step. More is not better and extra glue can cause sole pressure.

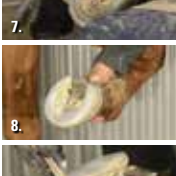


Application of the EasyShoe Compete Using EasyShoe Bond

1. Use 2 ounces of EasyShoe Bond or Equilox per shoe. 2 ounces is roughly 3 pumps of the handle if using a 14 ounce cartridge.
2. Add a ¼ teaspoon of Copper Sulfate per 2 ounces of EasyShoe Bond/Equilox and mix thoroughly with a tongue depressor (optional).



3. Apply glue to the grid pattern at the bottom of the shoe with the tongue depressor. Apply to the EasyShoe cuffs on both sides of the shoe. If you chose not to use Copper Sulfate you can use the application gun to apply the EasyShoe Bond/Equilox. The glue should be roughly 2mm (1/8 inch) thick.
4. Shape the glue with your fingers as shown.
5. Spread the back of the shoe with your hands and slide over the hoof. Try to keep the glue on the cuffs and don't let it migrate to the grid pattern when the shoe is applied to the hoof.
6. Check front of shoe and break over position. Apply light but even pressure to the shoe.
7. Spread the glue with your fingers in the cuff and toe area as shown.
8. Hold the leg or pastern (not the shoe) until the glue dries. Roughly five minutes is needed. Glue will set quicker in warmer temperatures and slower in cooler temperatures.
9. During the five minute drying time remove any excess glue that has come in contact with the sole. *This is a very important step. More is not better and extra glue can cause sole pressure.
10. After the glue has set the hoof can be placed on the ground.



Final Clean-Up

1. Let the glue set for at least 15 minutes.
2. Use your rasp and/or Buffy sanding tool to clean up the shoe and hoof.
3. Remove all excess glue from the sole, bar area and heels. Excess glue in these areas can make the horse uncomfortable during the expansion and contraction of the hoof.
4. Blend and smooth the glue in the cuff and toe areas with a Buffy or rasp.

HOW TO MEASURE FOR THE EASYSHOE COMPETE

EasyShoe *COMPETE*

EasyShoe Removal

Rasp Method

1. Use your rasp to remove the cuff portion of the EasyShoe. Be careful and work the cuff away slowly
2. Once the cuff is removed use a pair of pull offs to remove the shoe.



Vibrating cutter tool

1. Use the vibrating cutter tool to cut the cuff from the shoe.
2. Once the cuff is removed, use a pair of pull offs to remove the shoe.



1. After a fresh trim, measure the width of the hoof across the sole at the widest point.
2. Measure the length of the hoof from the toe to the buttress line of the heel. The buttress line is the farthest weight bearing point of the heel where the hoof wall ends. Do not include the heel bulbs in the measurement.
3. Compare your measurement with the size chart below.
4. Ideally, the length and width measurement will fit into the same size. If the length and width measurements indicate different sizes, select the larger size. If the width and length measurements are different by more than one size, this boot style is not recommended. Be sure to check your measurements against an alternative boot in the EasyCare line--another style may accommodate your horse's hoof shape better.



Size	Width in mm	Length in mm
0	95-115mm	111-118mm
1	105-125mm	119-127mm
2	115-135mm	128-136mm
3	125-145mm	137-143mm

Join the Conversation

For tips and tricks follow EasyCare:



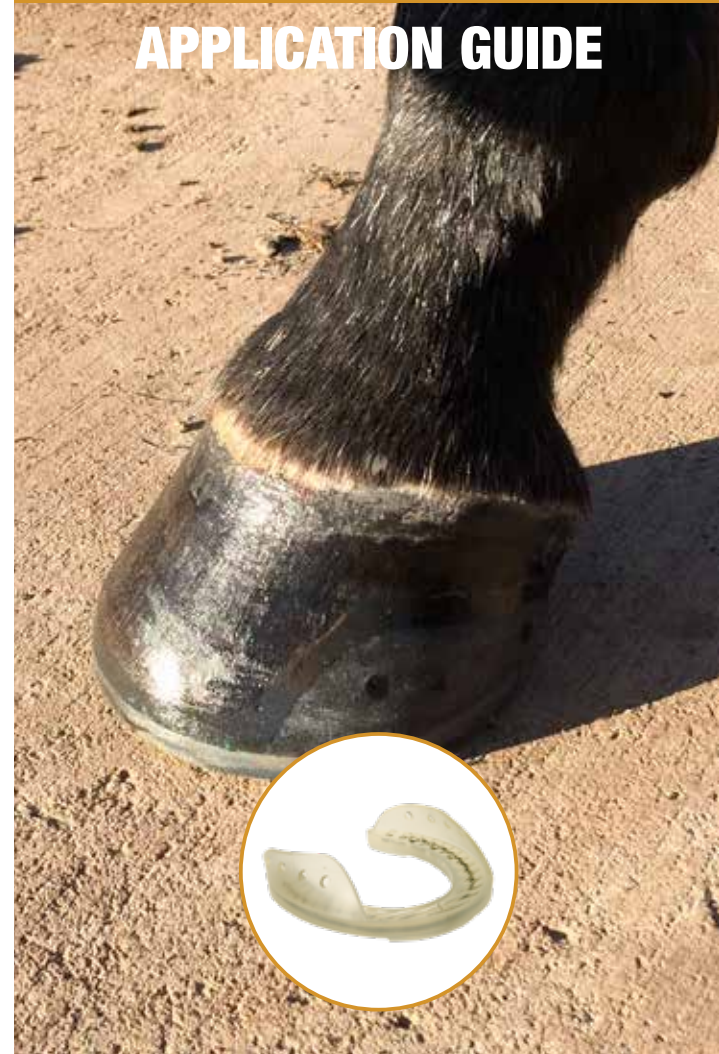
A product of EasyCare Inc.

EasyCare Guarantee

800.447.8836 | easycareinc.com

All products should be used in accordance with the instructions in this application guide. EasyCare Inc. hereby disclaims responsibility for the misuse of any product and for losses incurred through the use of any product described in this guide, on EasyCare Inc. product packaging, or on easycareinc.com. EasyCare Inc. products are not intended to diagnose or cure any medical condition.

APPLICATION GUIDE



EasyCare Inc.
The Ultimate in Hoof Protection